

Current transformer

FEATURES

Frequency range from 20 kHz~200 kHz

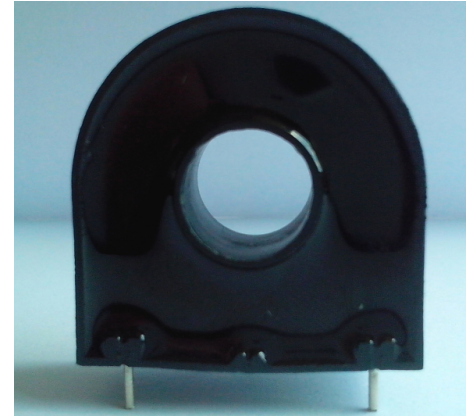
Primary current rating to 15Amps

Primary to secondary isolated to 2500 VAC

Approx weight 5.3g

Operating free air temperature range -40°C to 85°C

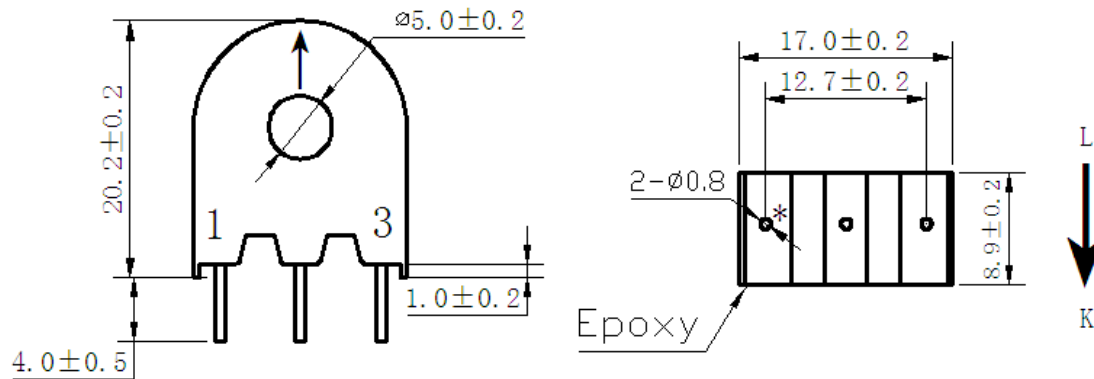
Storage temperature range -40°C to 125°C



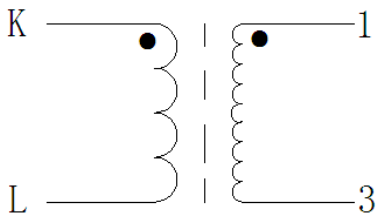
SELECTION GUIDE

Order Code	Number Of Turns	Pulse V sec x t max @ Frequency	L sec mH min@ Secondary inductance tested	R sec Ω max	Typical load Ω max
	500	700V. μ S 20kHz~200 kHz	700mH@10kHz.1V	25	500

MECHANICAL DIMENSIONS



CIRCUIT SCHEMATIC



APPLICATIONS :

Isolated current feed-back signal in switch mode power supplies

Isolated bi-directional current sensor with full wave bridge rectifier