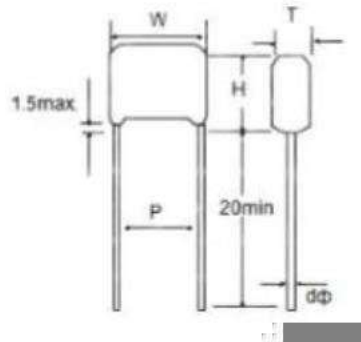


CBB81{ PPS }

Metallized Polypropylene Film Capacitor



CBB81 are non-inductively wound with metallized polypropylene film as dielectric and aluminum foil as the electrode with copper-clad steel leads and epoxy resin

SPECIFICATIONS

Rated voltage: 1000V,1200V,1600V,2000V,3000V

Capacitance range:0.0010-1.0UF

Capacitance tolerance:±5%(J) ±10%(k)

Operating temperature:40/85/21

Voltage proof:4.3UR(5s)

Dissipation Factor:≤0.3%(20°C, 10kHz)

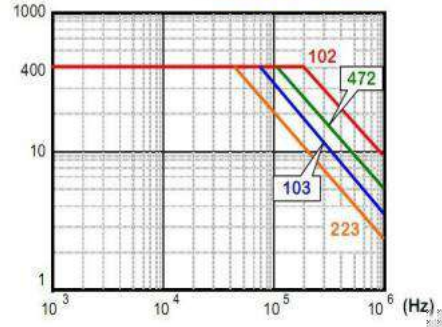
FEATURES

- 1.Very low loss at high frequency,suitable for high current
- 2.Excellent frequency and temperature characteristics
- 3.High insulation resistance,self-healing effect
- 4.Widely used in high frequency,DC,AC and pulse circuits

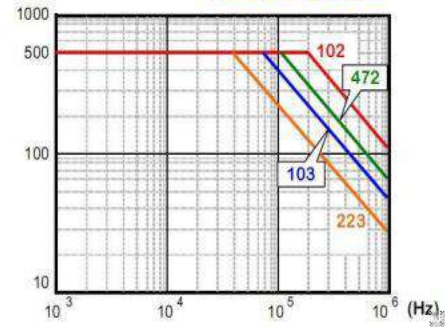
CBB81{ PPS }

Metallized Polypropylene Film Capacitor

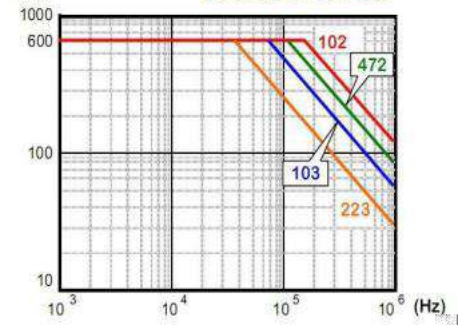
1000VDC / 400VAC



1600VDC / 500VAC



2000VDC / 600VAC



Part Number	Rated Cap.	1000VDC(1000Vo-p max)					Part Number	Rated Cap.	1600VDC(1400Vo-p max)					Part Number	Rated Cap.	2000VDC(1600Vo-p max)				
		W	H	T	P	d			W	H	T	P	d			W	H	T	P	d
		max	max	max	±1.0	±0.05			max	max	max	±1.0	±0.05			max	max	max	±1.0	±0.05
STCBB81102 3AL15	1000pF	18.0	12.0	7.0	15.0	0.8	STCBB81102 3CL15	1000pF	18.0	12.0	7.0	15.0	0.8	STCBB81102 3DL15	1000pF	18.0	12.5	7.5	15.0	0.8
STCBB81122 3AL15	1200pF	18.0	12.5	7.0	15.0	0.8	STCBB81122 3CL15	1200pF	18.0	12.5	7.0	15.0	0.8	STCBB81122 3DL15	1200pF	18.0	13.0	8.0	15.0	0.8
STCBB81152 3AL15	1500pF	18.0	13.0	7.5	15.0	0.8	STCBB81152 3CL15	1500pF	18.0	13.0	7.5	15.0	0.8	STCBB81152 3DL15	1500pF	18.0	13.5	8.5	15.0	0.8
STCBB81182 3AL15	1800pF	18.0	13.5	8.0	15.0	0.8	STCBB81182 3CL15	1800pF	18.0	13.5	8.0	15.0	0.8	STCBB81182 3DL15	1800pF	18.0	14.0	9.5	15.0	0.8
STCBB81222 3AL15	2200pF	18.0	14.0	9.0	15.0	0.8	STCBB81222 3CL15	2200pF	18.0	14.0	9.0	15.0	0.8	STCBB81222 3DL15	2200pF	18.0	15.0	10.0	15.0	0.8
STCBB81272 3AL15	2700pF	18.0	14.5	9.5	15.0	0.8	STCBB81272 3CL15	2700pF	18.0	14.5	9.5	15.0	0.8	STCBB81272 3DL15	2700pF	18.0	16.0	10.5	15.0	0.8
STCBB81332 3AL15	3300pF	18.0	15.0	10.0	15.0	0.8	STCBB81332 3CL15	3300pF	18.0	15.0	10.0	15.0	0.8	STCBB81332 3DL15	3300pF	18.0	16.5	11.5	15.0	0.8
STCBB81362 3AL15	3600pF	18.0	15.5	10.0	15.0	0.8	STCBB81362 3CL20	3600pF	24.0	14.0	8.5	20.0	0.8	STCBB81362 3DL20	3600pF	24.0	15.0	9.0	20.0	0.8
STCBB81392 3AL15	3900pF	18.0	16.0	10.0	15.0	0.8	STCBB81392 3CL20	3900pF	24.0	14.5	9.0	20.0	0.8	STCBB81392 3DL20	3900pF	24.0	15.5	9.5	20.0	0.8
STCBB81432 3AL15	4300pF	18.0	16.0	10.5	15.0	0.8	STCBB81432 3CL20	4300pF	24.0	15.0	9.5	20.0	0.8	STCBB81432 3DL20	4300pF	24.0	16.5	9.5	20.0	0.8
STCBB81472 3AL20	4700pF	24.0	14.0	8.0	20.0	0.8	STCBB81472 3CL20	4700pF	24.0	15.5	10.0	20.0	0.8	STCBB81472 3DL20	4700pF	24.0	17.0	10.0	20.0	0.8
STCBB81512 3AL20	5100pF	24.0	14.5	8.5	20.0	0.8	STCBB81512 3CL20	5100pF	24.0	16.0	10.0	20.0	0.8	STCBB81512 3DL20	5100pF	24.0	17.5	10.5	20.0	0.8
STCBB81562 3AL20	5600pF	24.0	15.5	9.0	20.0	0.8	STCBB81562 3CL20	5600pF	24.0	17.0	10.5	20.0	0.8	STCBB81562 3DL20	5600pF	24.0	18.0	11.0	20.0	0.8
STCBB81602 3AL20	6000pF	24.0	16.0	9.5	20.0	0.8	STCBB81602 3CL20	6000pF	24.0	17.5	10.5	20.0	0.8	STCBB81602 3DL20	6000pF	26.0	17.0	10.5	22.5	0.8
STCBB81622 3AL20	6200pF	24.0	16.5	10.0	20.0	0.8	STCBB81622 3CL20	6200pF	24.0	18.0	11.0	20.0	0.8	STCBB81622 3DL22	6200pF	26.0	17.5	11.0	22.5	0.8
STCBB81682 3AL20	6800pF	24.0	17.0	10.5	20.0	0.8	STCBB81682 3CL22	6800pF	26.0	17.0	9.5	22.5	0.8	STCBB81682 3DL22	6800pF	26.0	18.0	11.5	22.5	0.8
STCBB81752 3AL20	7500pF	24.0	17.5	10.5	20.0	0.8	STCBB81752 3CL22	7500pF	26.0	17.5	10.5	22.5	0.8	STCBB81752 3DL22	7500pF	26.0	18.5	12.0	22.5	0.8
STCBB81822 3AL20	8200pF	24.0	18.0	10.5	20.0	0.8	STCBB81822 3CL22	8200pF	26.0	18.0	11.0	22.5	0.8	STCBB81822 3DL22	8200pF	26.0	18.5	12.5	22.5	0.8
STCBB81912 3AL20	9100pF	24.0	18.0	10.5	20.0	0.8	STCBB81912 3CL22	9100pF	26.0	18.5	11.5	22.5	0.8	STCBB81912 3DL22	9100pF	26.0	19.0	13.0	22.5	0.8
STCBB81103 3AL20	0.010uF	24.0	18.5	11.0	20.0	0.8	STCBB81103 3CL22	0.010uF	26.0	19.0	12.0	22.5	0.8	STCBB81103 3DL22	0.010uF	26.0	20.0	13.5	22.5	0.8
STCBB81123 3AL20	0.012uF	24.0	18.5	11.0	20.0	0.8	STCBB81123 3CL27	0.012uF	32.0	18.0	11.0	27.5	0.8	STCBB81123 3DL27	0.012uF	32.0	19.0	12.5	27.5	0.8
STCBB81153 3AL20	0.015uF	24.0	18.5	11.0	20.0	0.8	STCBB81153 3CL27	0.015uF	32.0	20.5	11.5	27.5	0.8	STCBB81153 3DL27	0.015uF	32.0	20.5	13.5	27.5	0.8
STCBB81183 3AL20	0.018uF	24.0	18.5	11.5	20.0	0.8	STCBB81183 3CL27	0.018uF	32.0	21.0	12.5	27.5	0.8	STCBB81183 3DL27	0.018uF	32.0	22.0	14.0	27.5	0.8
STCBB81223 3AL27	0.022uF	32.0	17.5	10.0	27.5	0.8	STCBB81223 3CL27	0.022uF	32.0	24.0	14.0	27.5	0.8	STCBB81223 3DL27	0.022uF	32.0	24.0	15.5	27.5	0.8
STCBB81273 3AL27	0.027uF	32.0	18.0	10.5	27.5	0.8	STCBB81273 3CL27	0.027uF	32.0	25.5	15.5	27.5	0.8	STCBB81273 3DL27	0.027uF	32.0	26.0	16.0	27.5	0.8
STCBB81333 3AL27	0.033uF	32.0	20.0	11.0	27.5	0.8	STCBB81333 3CL27	0.033uF	32.0	27.0	16.5	27.5	0.8	STCBB81333 3DL27	0.033uF	32.0	27.5	17.0	27.5	0.8
STCBB81363 3AL27	0.036uF	32.0	20.5	11.5	27.5	0.8	STCBB81363 3CL27	0.036uF	32.0	27.5	17.5	27.5	0.8	STCBB81363 3DL27	0.036uF	32.0	28.5	18.5	27.5	0.8
STCBB81393 3AL27	0.039uF	32.0	21.0	12.0	27.5	0.8														
STCBB81473 3AL27	0.047uF	32.0	21.5	12.5	27.5	0.8														
STCBB81563 3AL27	0.056uF	32.0	22.0	13.0	27.5	0.8														
STCBB81683 3AL27	0.068uF	32.0	23.0	14.0	27.5	0.8														
STCBB81823 3AL27	0.082uF	32.0	23.5	14.5	27.5	0.8														
STCBB81104 3AL27	0.10uF	32.0	24.0	15.0	27.5	0.8														

Unit:mm