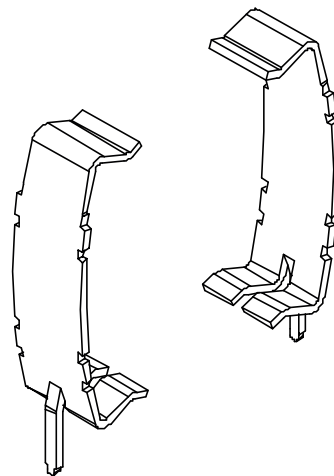
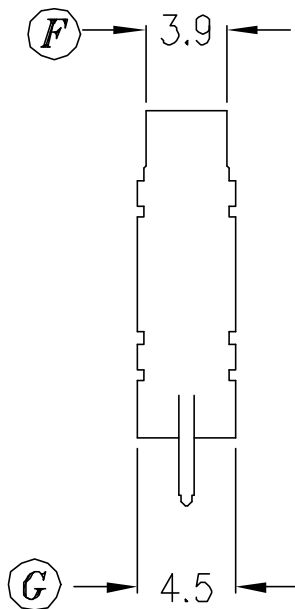
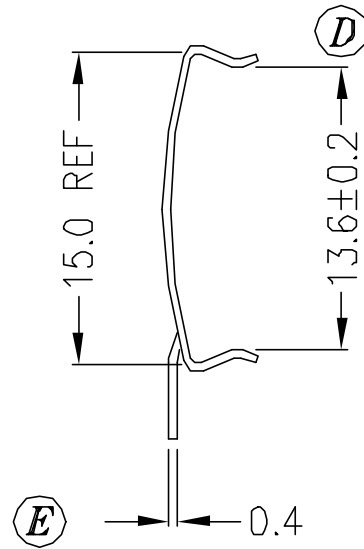
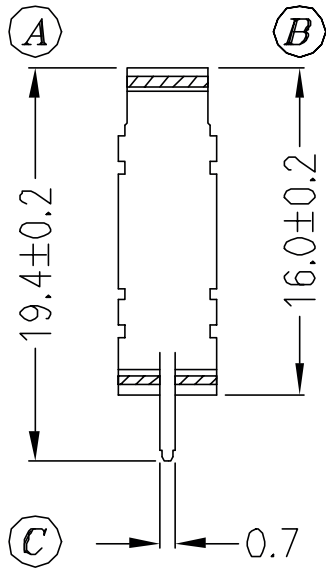


Скоба | **CG-RM8**  
Clip

Материал | **Нержавеющая сталь**  
Material | **Stainless steel**



Допуски Tolerances	0 < L ≤ 4	±0,1mm.
	4 < L ≤ 16	±0,2mm.
	16 < L ≤ 63	±0,3mm.

Толщина выводов  
Pin pitch ±0,20mm.